

SOMERSET COUNTY LIBRARY COMMISSION
Security Camera System Bid due 10/8/19
Addendum #2
September 27, 2019

1) The following information was distributed at the project walkthrough meeting on Friday, September 27, 2019 at 9:00 A.M. at the Bridgewater branch:

- a) Rough diagrams (attached) detailing the approximate desired location for each camera installation.
- Each page is labelled with SCLSNJ's internal branch code, corresponding to the branches below.
 - Green designates the location of a basic camera.
 - Pink designates the location of a wide-angle camera.
 - Yellow designates the location of an exterior camera.
 - Red star designates the location of the branch network equipment.

Branch Location	Installation Locations	Camera Type
Bound Brook branch (BBL) 402 E High St Bound Brook, NJ 08805	Youth Services, facing service desk Ramp door, side hallway and teen space Behind Circulation, facing High St entrance Reading Room, facing DVD collection Public computer room Community Commons space/YS stairs Exterior alley Exterior parking lot	Wide-Angle Camera Basic Camera Basic Camera Wide-Angle Camera Basic Camera Basic Camera Exterior Camera Exterior Camera
Bridgewater branch (BWL) 1 Vogt Dr Bridgewater, NJ 08807	Facing the Circulation desk Public internet stations Youth Services room Lobby, facing entryway Tech Team	Wide-Angle Camera Wide-Angle Camera Basic Camera Basic Camera Basic Camera
Hillsborough branch (HIL) 379 South Branch Rd Hillsborough, NJ 08844	Adult Services, facing desk, computers Lobby, facing circulation	Wide-Angle Camera Basic Camera
Manville branch (MVL) 100 S 10th Ave Manville, NJ 08835	Circulation to include entrance, computers	Wide-Angle Camera
Mary Jacobs branch (MJL) 64 Washington St Rocky Hill, NJ 08553	Upper level, facing rear doors Lobby, facing circulation	Wide-Angle Camera Basic Camera
North Plainfield branch (NPL) 6 Rockview Ave North Plainfield, NJ 07060	Youth Services Rear alley, exterior Lobby, facing entryway	Wide-Angle Camera Exterior Camera Wide-Angle Camera

	Front ramp, exterior	Exterior Camera
Peapack & Gladstone branch (PGL) School St Peapack, NJ 07977	Reference, facing circulation, entryways	Wide-Angle Camera
Somerville branch (SML) 35 West End Ave Somerville, NJ 08876	Public computers, reference desk Viewing circulation, stairway, entrance Youth Services, including storytime area Front door, exterior	Wide-Angle Camera Basic Camera Wide-Angle Camera Exterior Camera
Warren Township branch (WTL) 42 Mountain Blvd Warren, NJ 07059	Circulation desk Second floor at the main stair, facing room	Basic Camera Wide-Angle Camera
Watchung branch (WGL) 12 Stirling Rd Watchung, NJ 07069	Reading Room, facing Circulation, entryway	Basic Camera

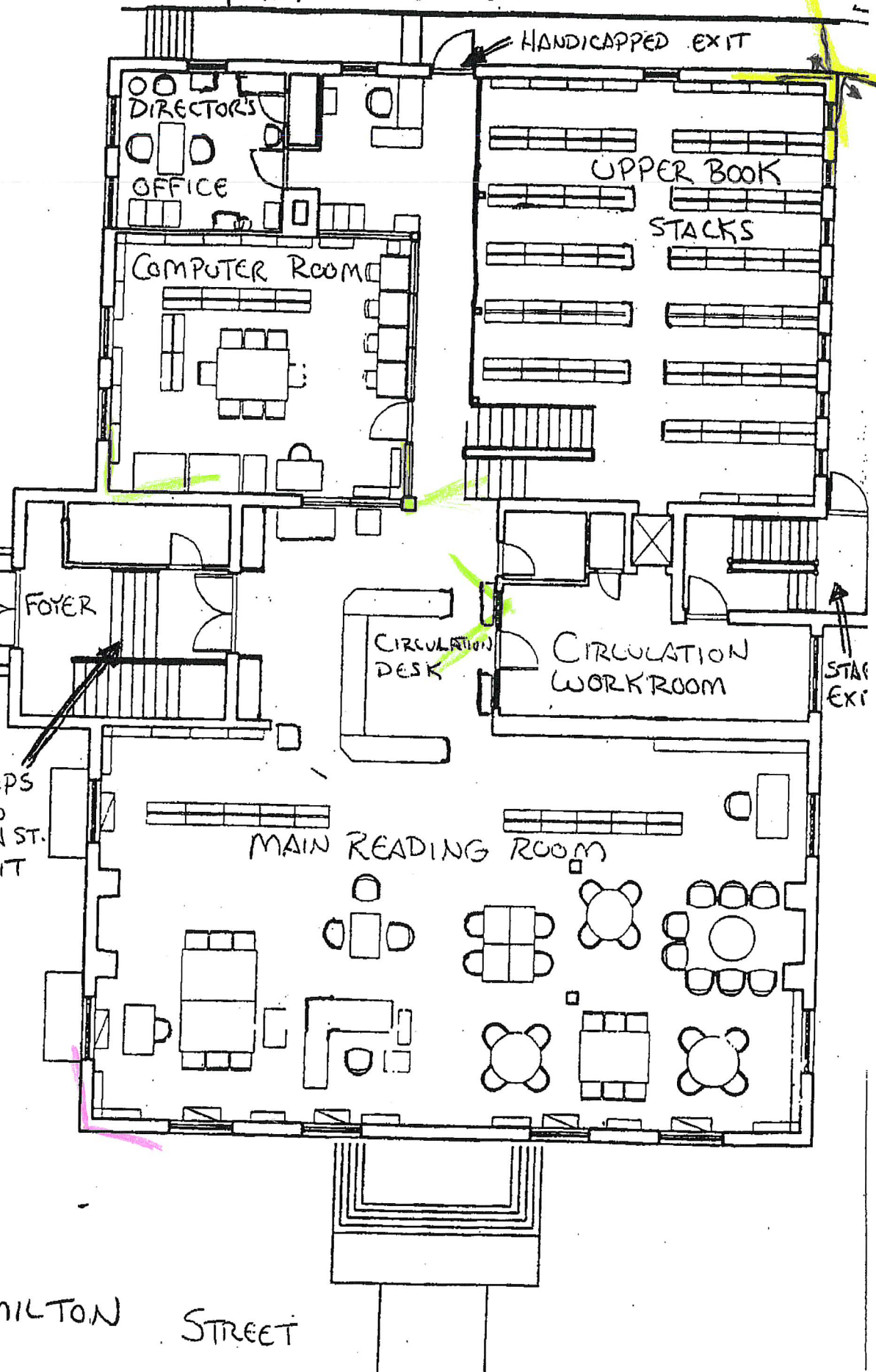
MAIN LEVEL

BBL 1

HIGH STREET

STEPS TO HIGH ST. EXIT

HAMILTON STREET



BOUND BROOK MEMORIAL LIBRARY
LOWER LEVEL

Boiler Room
EXIT

CIRCULATION
OFFICE

LOWER BOOK
STACKS

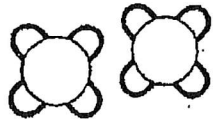
Boiler
Room
(STAFF ONLY)

STEPS
TO
STAFF
EXIT

CHILDREN'S
PROGRAM
ROOM

CHILDREN'S
OFFICE

STEPS
TO
HIGH ST.
EXIT

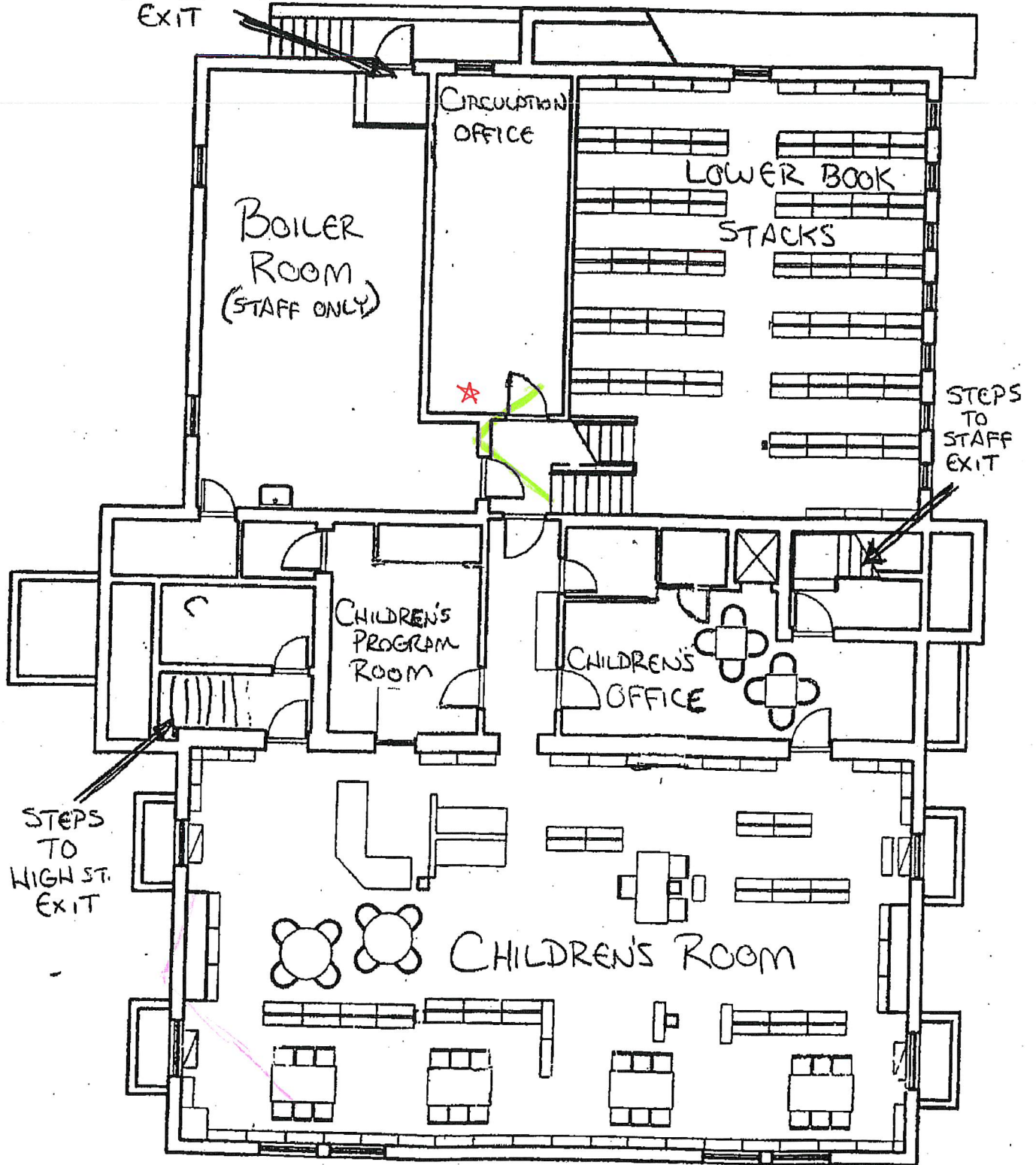


CHILDREN'S ROOM

HAMILTON STREET

BBL V

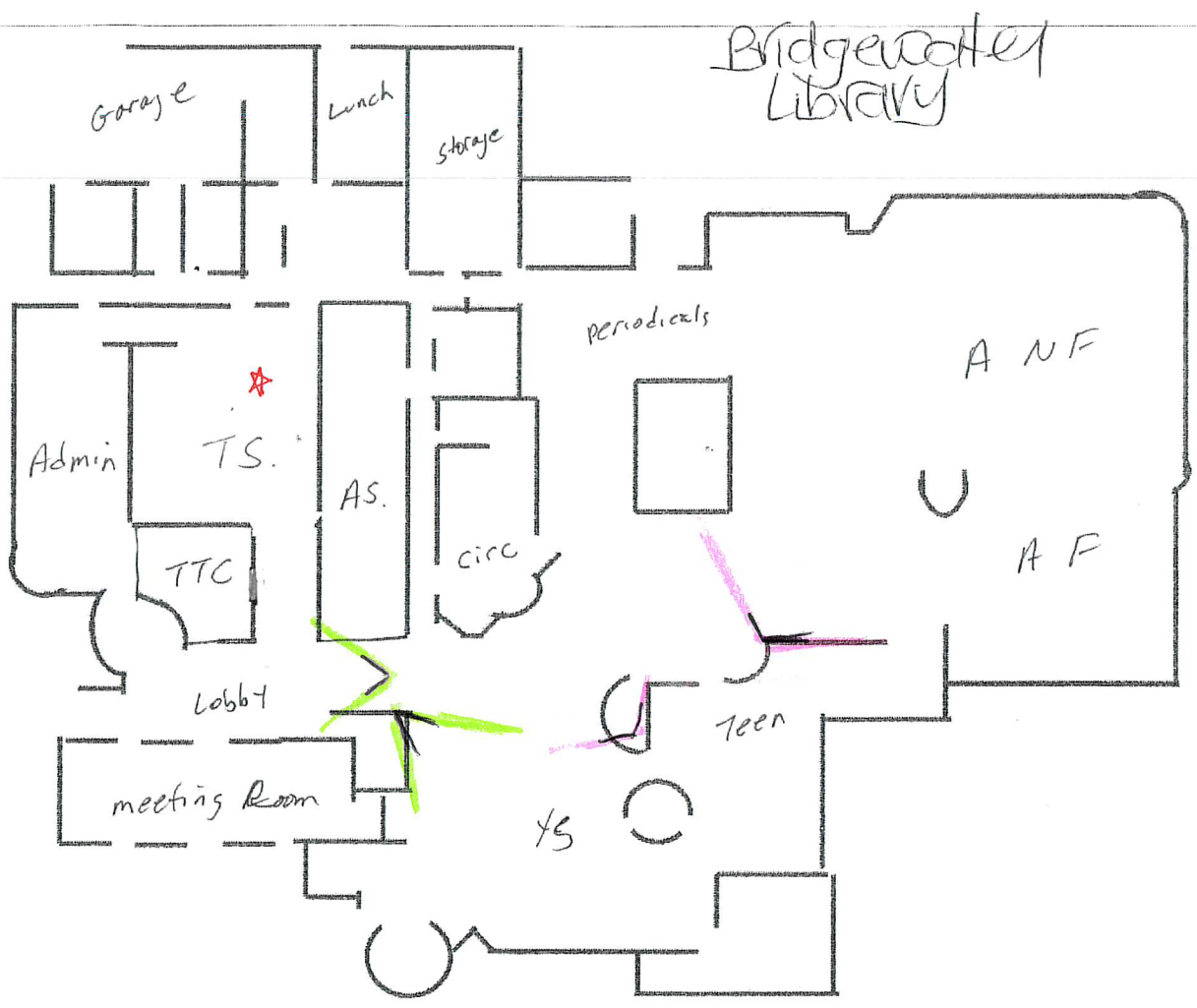
HIGH STREET



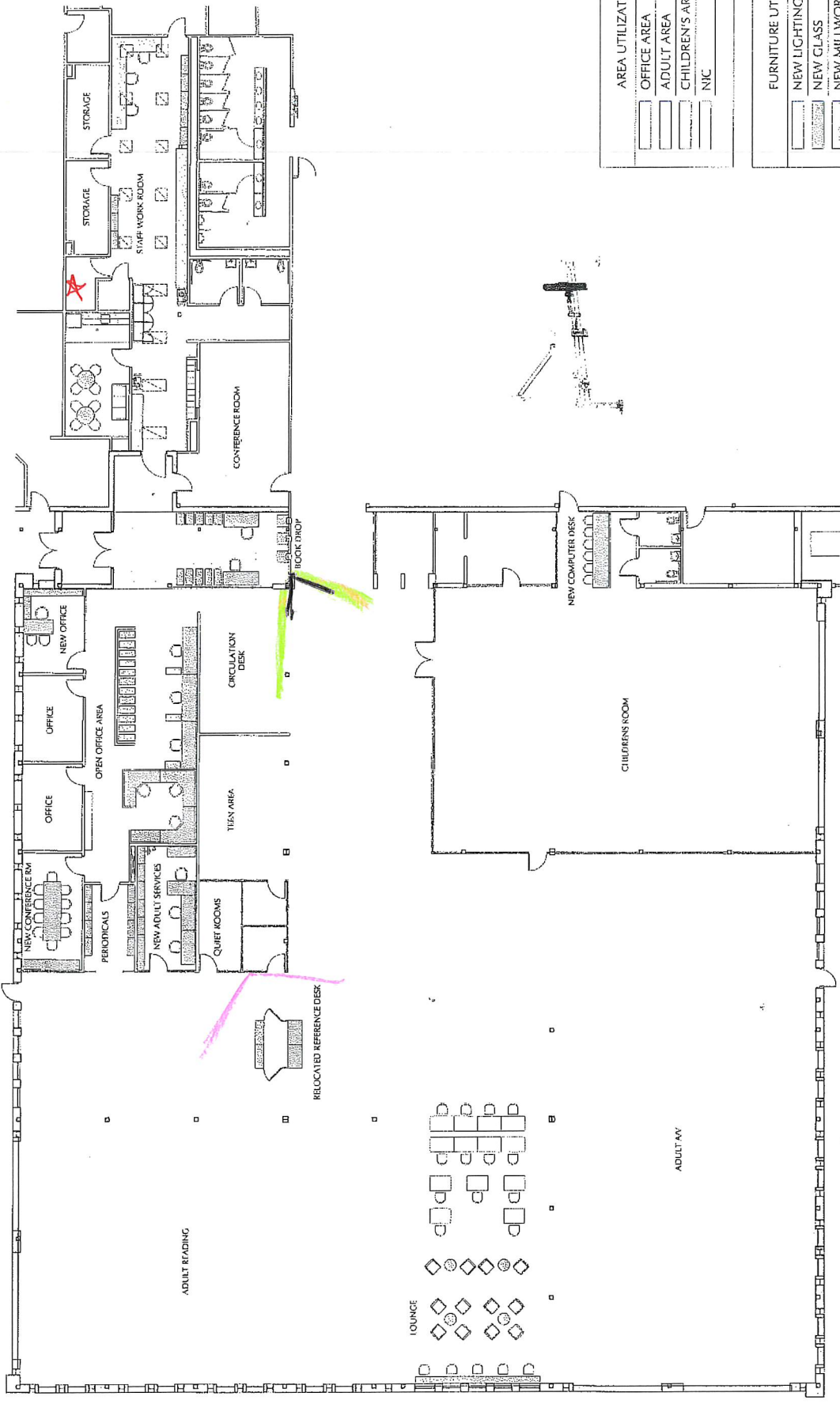
BWL

8/11/2016

library floor plan2.jpg



HIL



AREA UTILIZATION	
<input type="checkbox"/>	OFFICE AREA
<input type="checkbox"/>	ADULT AREA
<input type="checkbox"/>	CHILDREN'S AREA
<input type="checkbox"/>	NIC
FURNITURE UTILIZATION	
<input type="checkbox"/>	NEW LIGHTING
<input type="checkbox"/>	NEW GLASS
<input type="checkbox"/>	NEW MILLWORK
<input type="checkbox"/>	NEW/REUSED FURNITURE + SHELVING
<input type="checkbox"/>	EXISTING BOOK CARTS

1 CONCEPT PLAN
SCALE: 1/8" = 1'-0"

HILLSBOROUGH
COMMUNITY LIBRARY

BELFIORE ARCHITECTS PC

Proj #9166.00

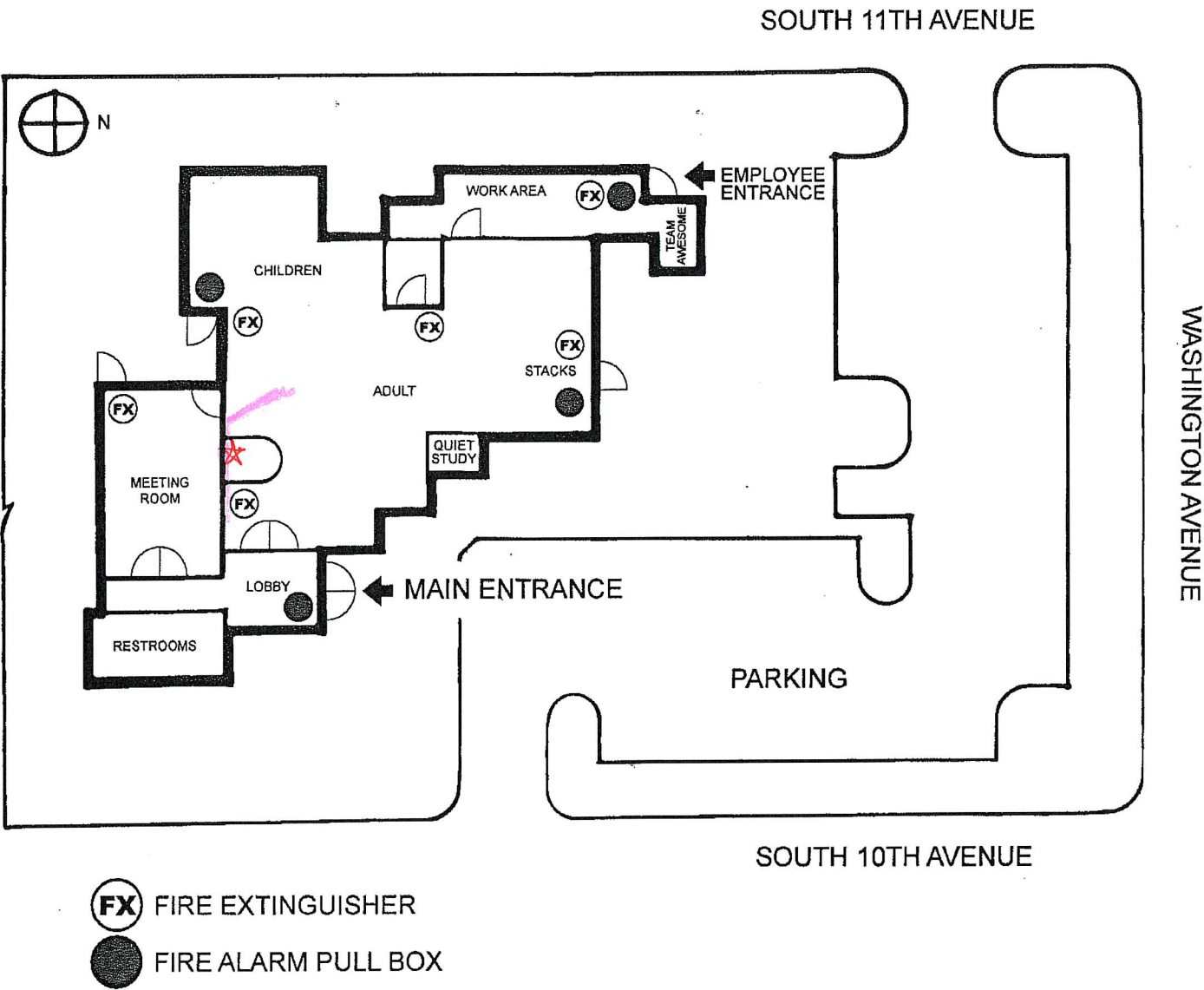
C17 1

4/16/12

scale: 1/8" = 1'-0"

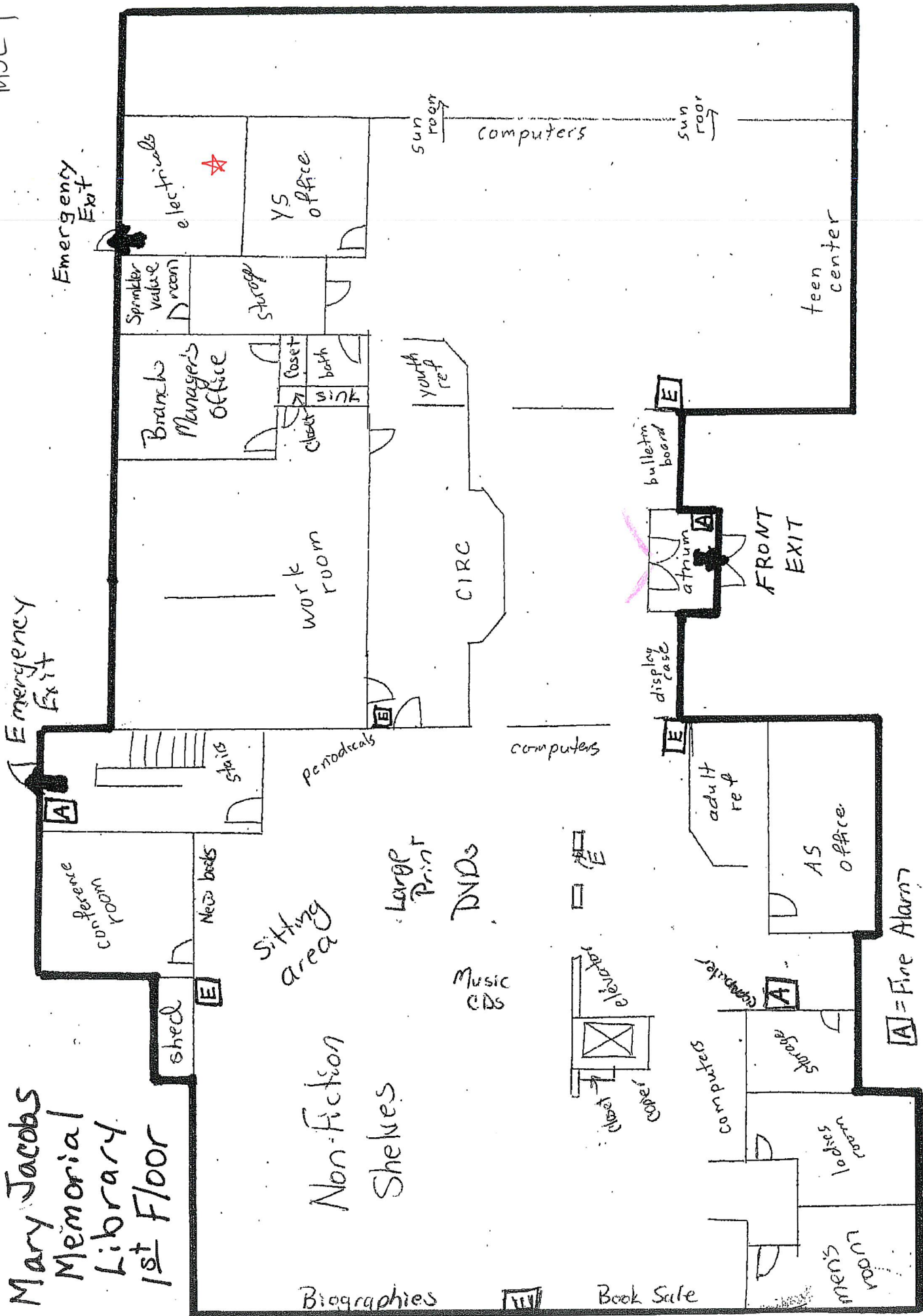
7/2/21

MANVILLE LIBRARY BRANCH FIRE ESCAPE PLAN

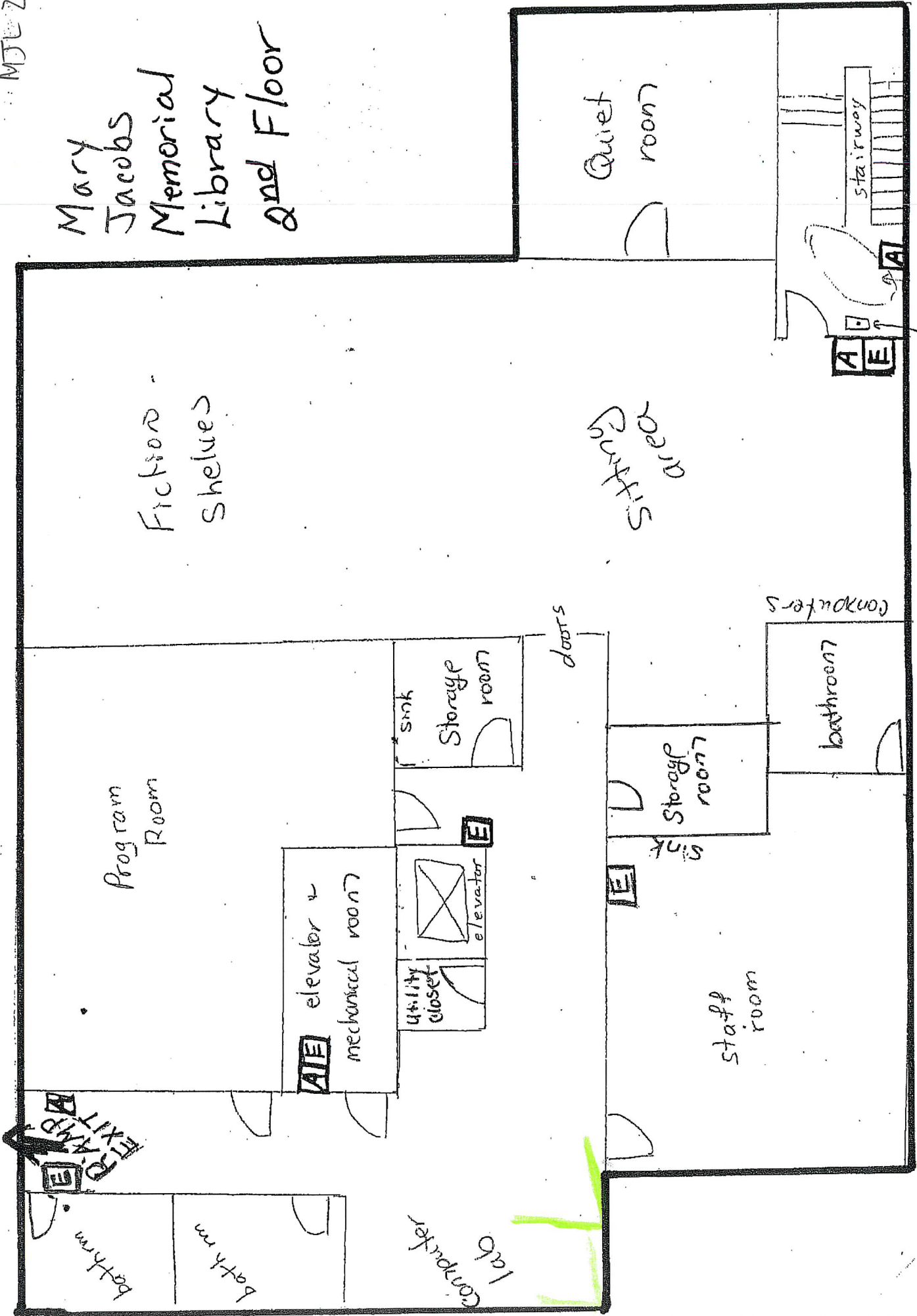


Mary Jacobs Memorial Library 1st Floor

MJL 1



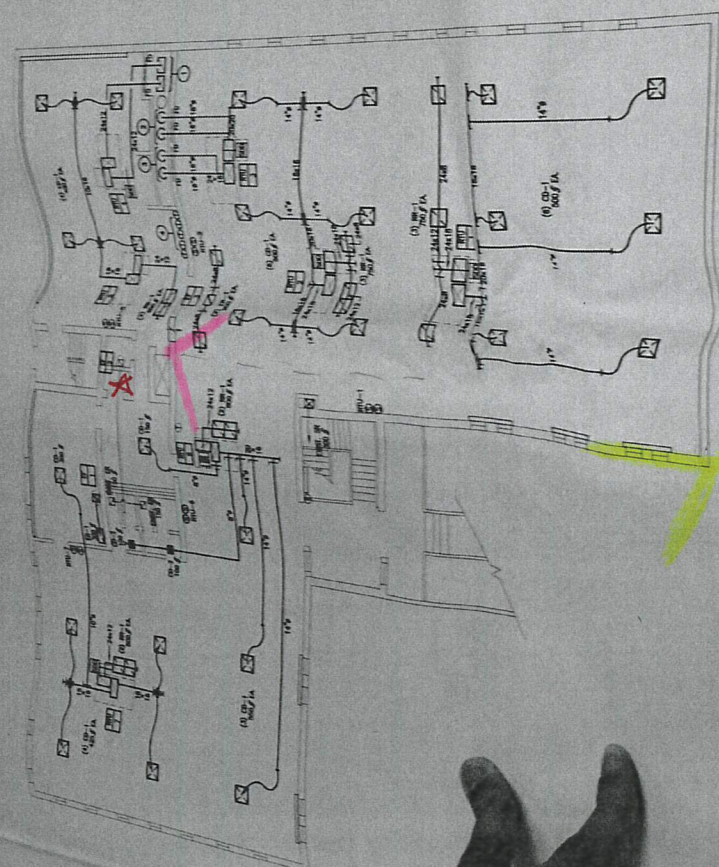
Mary
Jacobs
Memorial
Library
2nd Floor



emergency
aid button

emergency
rescue area

NPL I



2 MECHANICAL UPPER LEVEL NEW WORK PLAN
SCALE: 1/8"=1'-0"

UPPER LEVEL NEW WORK KEY NOTES

- 1 2412 SUPPLY AND RETURN DUCTS DOWN TO LOWER LEVEL.
- 2 (2) 16" RETURN DUCTS, COILS, AND TRANSITION TO 30412 DOWN TO LOWER LEVEL.
- 3 (2) 16" SUPPLY DUCTS, COILS, AND TRANSITION TO 30412 DOWN TO LOWER LEVEL.
- 4 LOCATION FOR RTUs, PROGRAMMABLE THERMOSTATS, PROVIDE ROUTE MOUNTED TEMPERATURE AND HUMIDITY SENSORS IN THE PUBLIC SPACE.

REMOVE THE RETURN, AND RE-INSTALLATION OF
DO NOT TO ALLOW FOR THE RETURN, AND
MAKE THE INSTALLATION OF NEW DUCTWORK WITH

Project	DATE	DESCRIPTION
NORTH PLAINFIELD LIBRARY HVAC UPGRADE		

TECHNICAL LOWER LEVEL NEW WORK PLAN

SCALE: 1/8"=1'-0"

PGL

FOOTPRINT of PGL

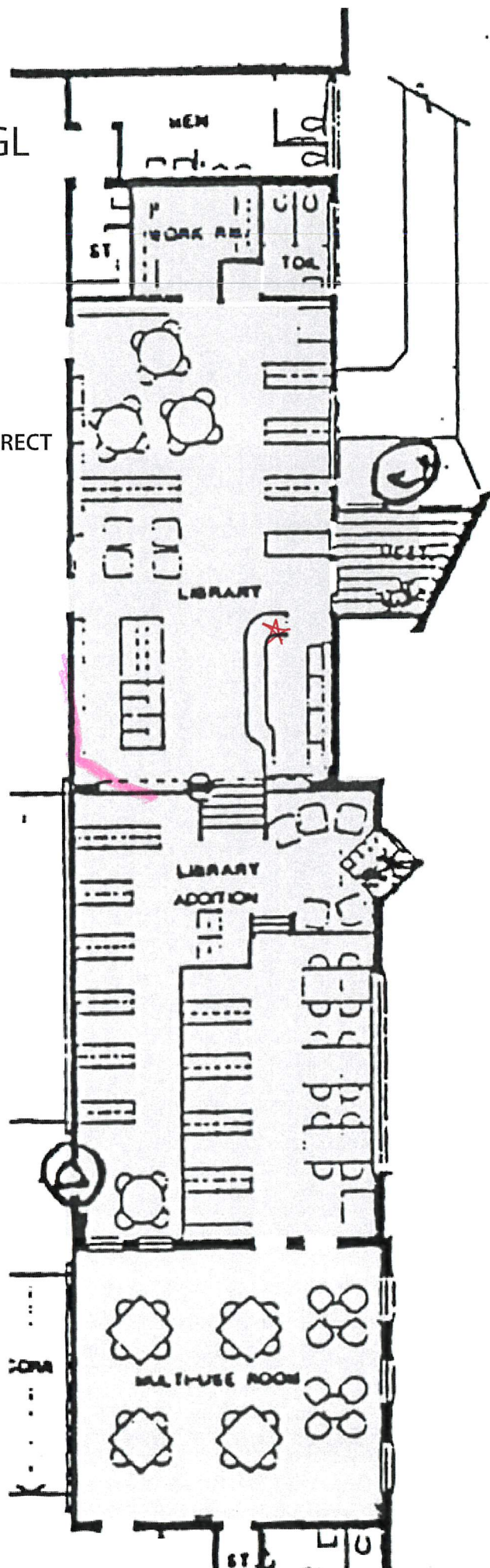
CURRENT LIBRARY IS
APPROXIMATELY: 2,300 SF
(GREEN AREA)

WITH ADDED CONFERENCE
ROOM SPACE: 2,875 SF
(BLUE AREA)

CONFIGURATION IS NOT CORRECT

GREEN INDICATES
CURRENT LIBRARY

BLUE INDICATES
NEW SPACE ADDED TO
LIBRARY FOOTPRINT



REMOVE ALL EXISTING TILE & SUBSTRATE DOWN TO SOLID STRUCTURE. THEN INSTALL NEW TILE, GROUT, PARTITIONS, FIXTURES & ACCESSORIES.

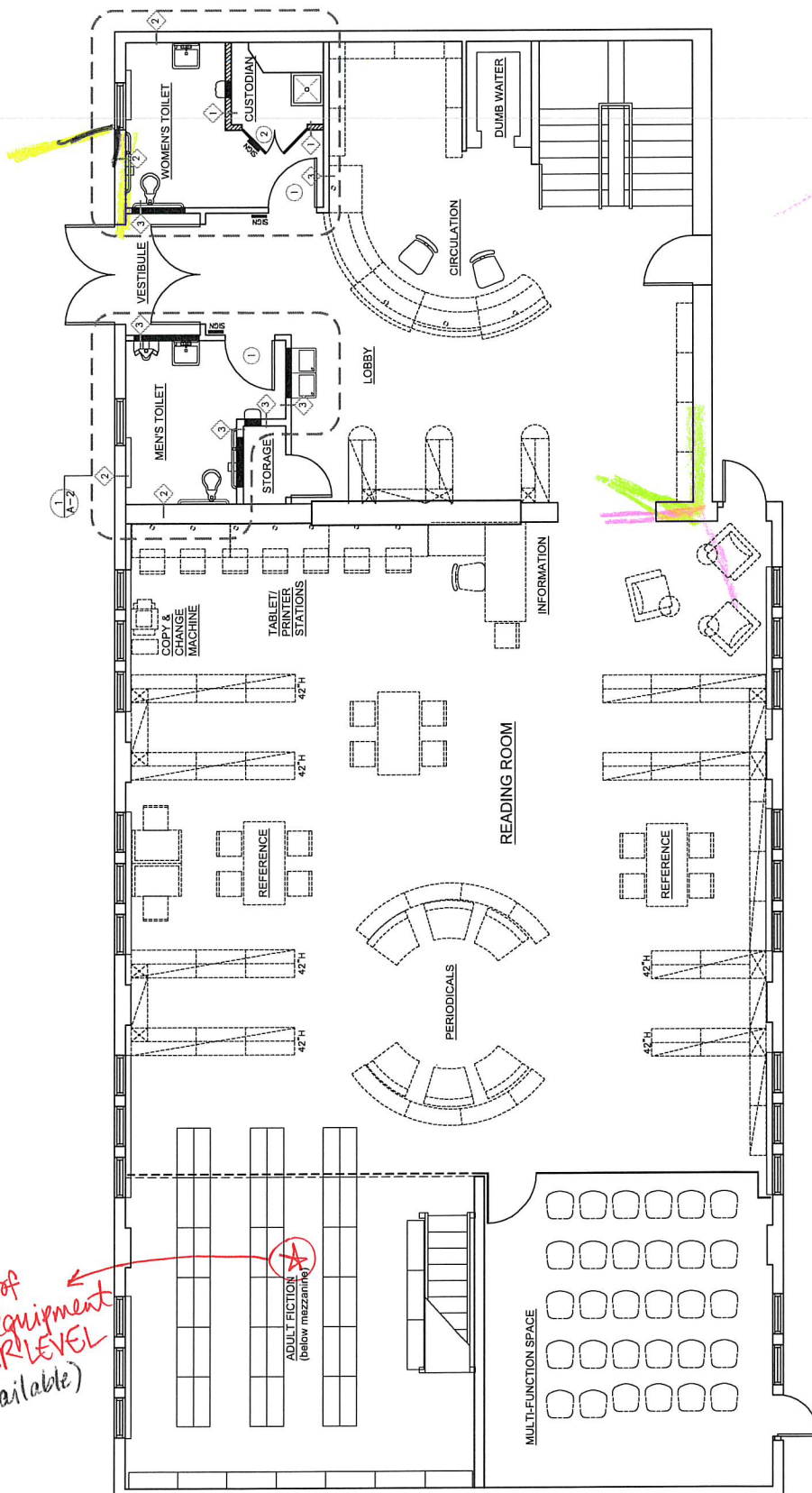
FOR ADDITIONAL WORK'S DEMOLITION INFO. PREP CONTRACTOR WILL RECEIVE ALL NEW FINISHES & FIXTURES.

VESTIBULE

MEN'S TOILET

WOMEN'S TOILET

STORAGE

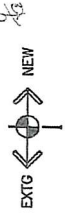
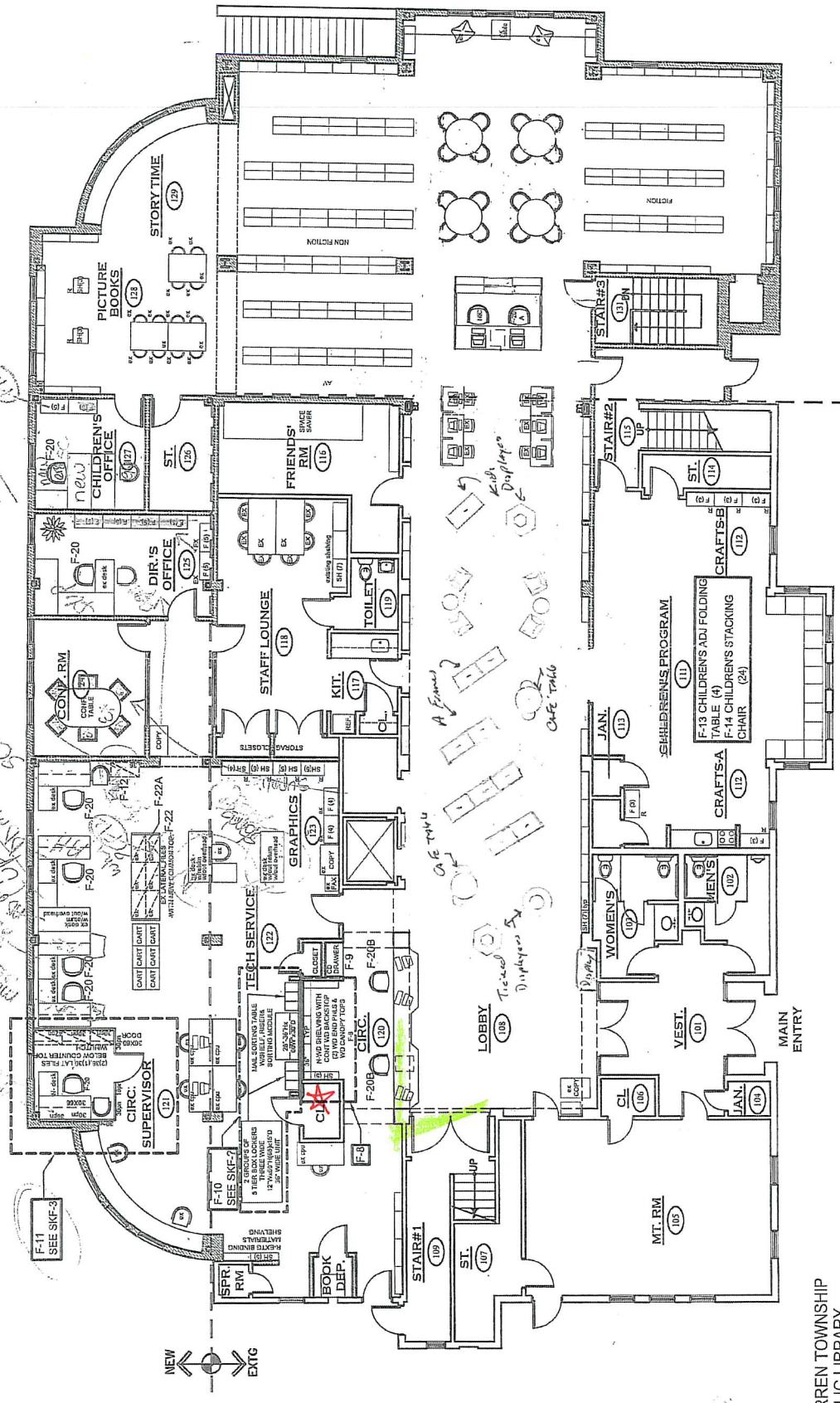


WTL 1

re-revision

new

old - remove
new - replace to be
old - remove
new - replace to be



3/32 Scale

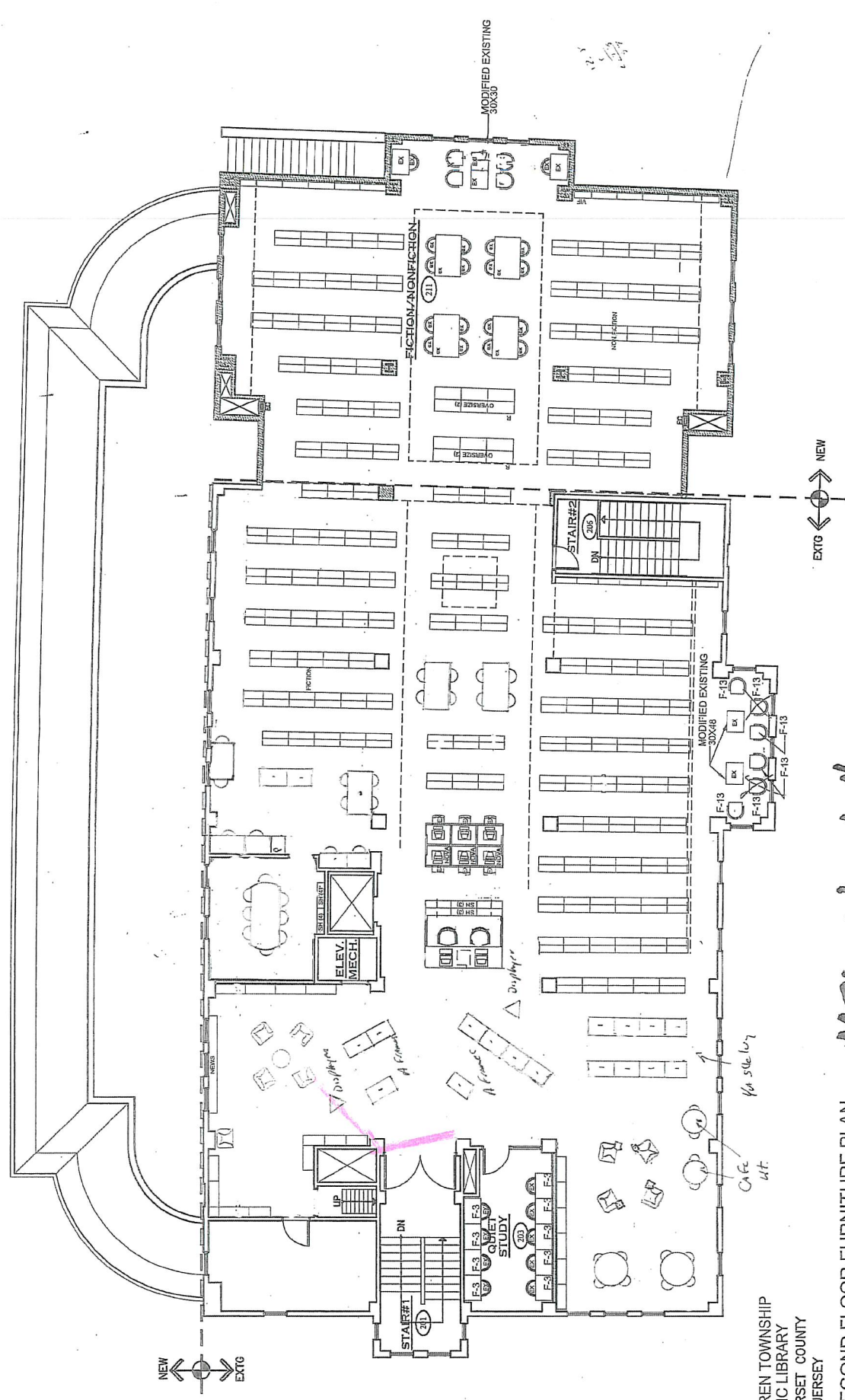
MTA 01/20/04

WARREN TOWNSHIP
PUBLIC LIBRARY
SOMERSET COUNTY
NEW JERSEY

1 FIRST FLOOR FURNITURE PLAN

C 2003 Arcari & Iovino Architects, P.C.

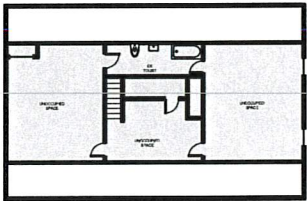
WTL 2



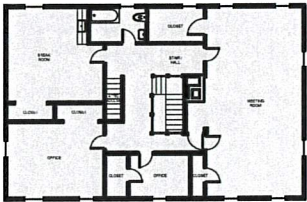
WARREN TOWNSHIP
PUBLIC LIBRARY
SOMERSET COUNTY
NEW JERSEY
2 SECOND FLOOR FURNITURE PLAN
C 2003 Arcari & Iovino Architects, P.C.

WGL

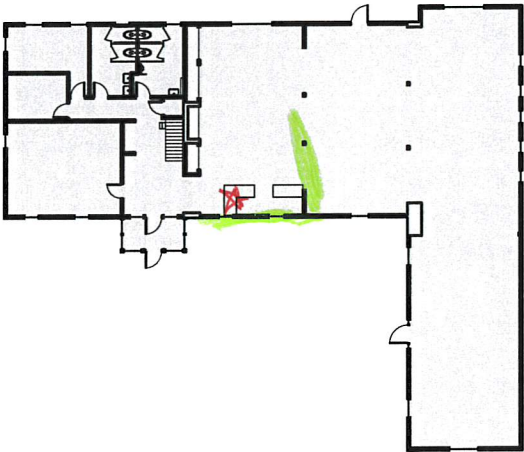
ATTIC



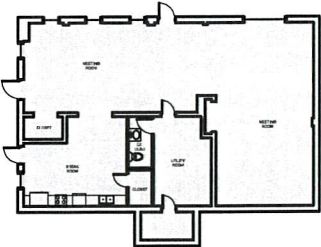
UPPER FLOOR



MAIN FLOOR



LOWER LEVEL



FLOOR AREAS	
EX. BASEMENT:	1,682 SF
EX. FIRST FLOOR:	3,644 SF
EX. SECOND FLOOR:	1,621 SF
EX. ATTIC:	1,008 SF
TOTAL:	7,955 SF